



DriSpace Product Range

August 2025





DRISPACE

DriSpace is a division of TCL Hunt, a New Zealand company whose origin dates back to 1937.

TCL Hunt has been a leader in the supply of high quality technical products and equipment to many different industries including the building sector.

The DriSpace product range comprises of three brands, with varying capabilities.

- DRISTUD: Fire Retardant Wall Wrap, Fire Retardant and non-Fire Retardant Roof Underlays, Window Flashing Tape and Self-Supporting White Faced Foils.
- VENT: Passive Ventilation products for roof and wall.
- PROCTORPASSIVE: Technical airtight membranes, ranging from high vapour permeable self-adhesives, UV resistant membranes and vapour retarder and convection barriers.

TCL Hunt has a Quality Management System which includes ISO 9001 certification. That said, there is no finish line in business, so all staff are committed to the process of continuous improvement, relishing the challenge to always provide best practice solutions, with products and services that build trust and maintain customer confidence and loyalty.

All products are sold through building merchants and roll-formers throughout the country.

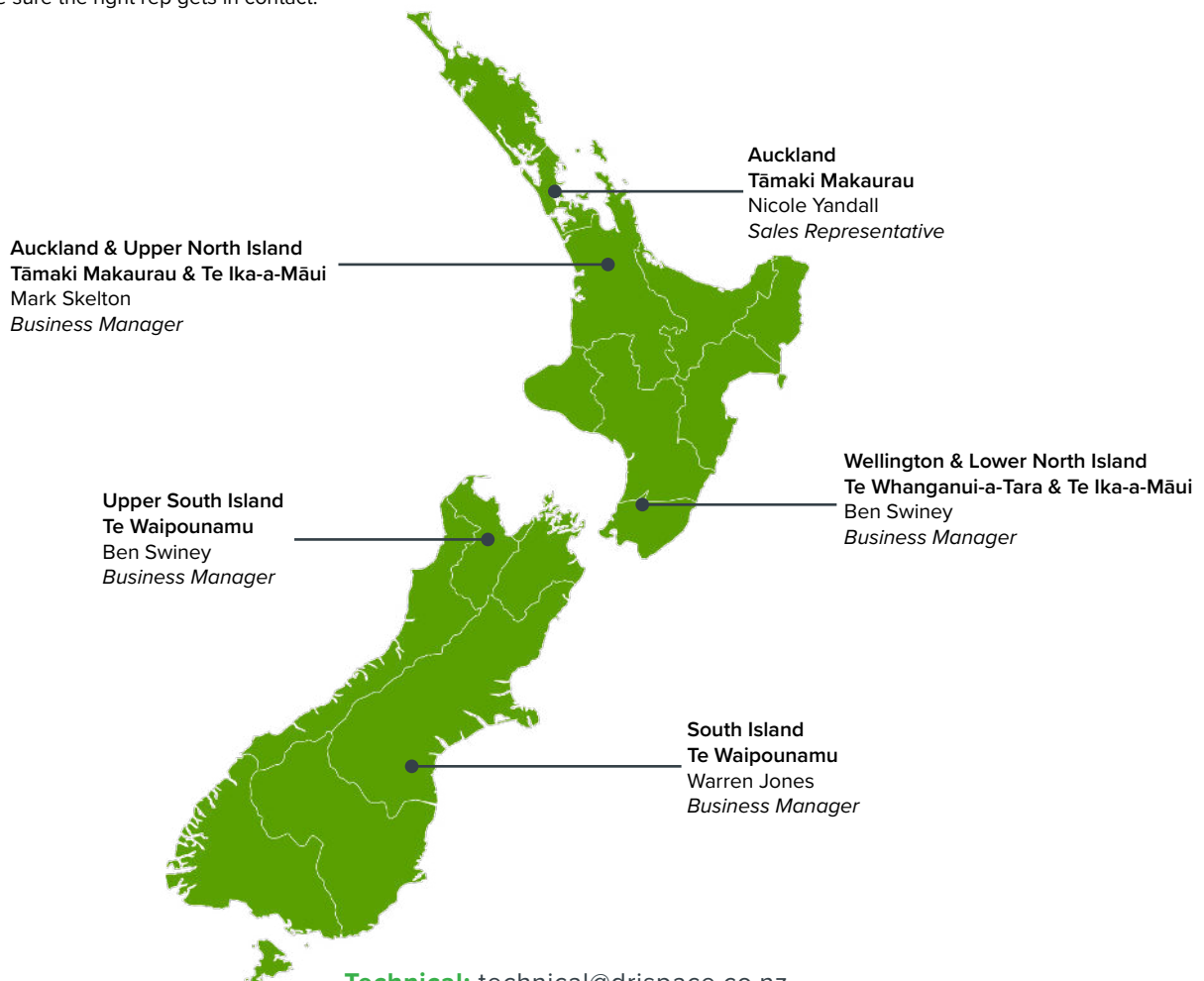
Contents

PRODUCTS

| | |
|---|----|
| DriStud Eco Range | 04 |
| DriStud Range: Wall Application | 06 |
| DriStud Range: Custom Print | 07 |
| DriStud Range: Fire Retardant Synthetic Roof Underlays | 08 |
| DriStud Range: Non-Fire Retardant Synthetic Roof Underlays | 09 |
| DriStud Range: White Faced Foil & Anti Condensation Membrane | 10 |
| Vent Range: | 11 |
| Vent Systems: | 14 |
| Proctor Range: Airtight Membranes | 16 |
| Proctor Range: Internal Vapour Control & Other | 17 |
| Proctor Range: Tapes | 18 |
| COMPARISON CHART | 20 |
| WARRANTY | 22 |

Find Us

For more information, or if you need to get in contact with a sales rep, send your query through to orders@drispace.co.nz and we will make sure the right rep gets in contact.



Technical: technical@drispace.co.nz

Company: DriSpace **Web:** www.drispace.co.nz

Email: orders@drispace.co.nz **Telephone:** 0800 374 7883

INTRODUCING THE DRISTUD ECO RANGE

DriStud EcoDri FR & DriStud EcoWall Wrap are both made using 80% Global Recycle Standard certified recycled non woven materials.

EcoDri FR Underlay is a heavy-weight, fire-retardant, self-supporting synthetic roof underlay with excellent vapour permeability. It features a microporous, water-resistant film laminated to two layers of non-woven spun-bonded polypropylene.

EcoDri FR is designed for use beneath roof claddings to assist with the weathertightness and moisture management of buildings.

DriStud EcoWall Wrap is engineered from resilient non-woven fabric and is a commercial grade building wrap. DriStud EcoWall Wrap has a high resistance to moisture and is perfectly suited for Residential and Commercial Buildings with high-permeable moisture transfer requirements.

CodeMark >>>
CERTIFIED



DriStud EcoDri FR Roof Underlay

Made using 80% recycled
non-woven materials

- CodeMark™ Certified
- 181 gsm
- Self-supporting
- UV Exposure: 21 days
- Fire Retardant
- Breathable and absorbent
- Suitable for wind zones up to and including 'Extra High'
- Can be installed over timber and steel roof framing



AVAILABLE SIZES

1250mm x 40m

50m²

DriStud EcoWall Wrap

Made using 80% recycled
non-woven materials

- CodeMark™ Certified
- Custom print available
- Fire retardant
- Air barrier
- UV Exposure: 90 days
- Vapour permeable & absorbent
- Suitable for timber or steel framed buildings, suitable for gable ends
- Suitable for "Very High" Wind Zones
- Suitable for "Extra High" Wind Zones when used as a flexible underlay over a rigid wall underlay



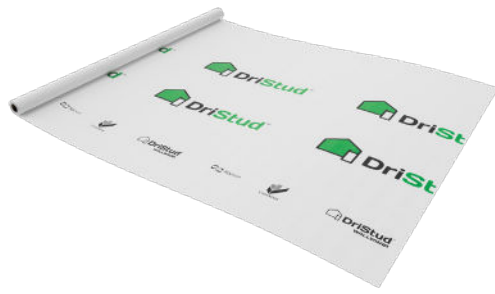
AVAILABLE SIZES

2740mm x 36.5

100m²

Products - DriStud Range

Wall Application



DRISTUD WALL WRAP

- CodeMark™ Certified
- Custom print available
- Fire retardant
- Air barrier
- UV resistant: 90 days
- Water resistant, absorbent and breathable
- Suitable for timber or steel framed buildings, suitable for gable ends
- Can be used where cladding is installed over a cavity system or direct fixed cladding
- Suitable for wind zones up to and including 'Very High' and 'Extra High' when used as a flexible underlay over a rigid wall underlay, as outlined in NZS 3604



AVAILABLE SIZES

| | |
|----------------|-------------------|
| 1370mm x 18.5m | 25m ² |
| 1370mm x 73m | 100m ² |
| 2740mm x 9.2m | 25m ² |
| 2740mm x 36.5 | 100m ² |



DRISTUD REPEL - FLEXIBLE AIR BARRIER

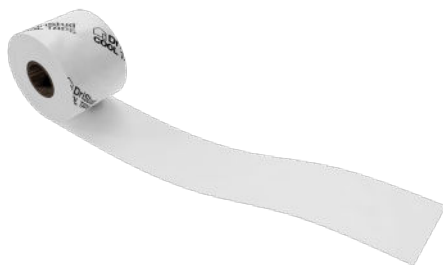
Temporary weather protection allowing the continuation of internal work without cladding in place

- CodeMark™ Certified
- Custom print available
- Fire retardant
- Vapour permeable and water resistant
- UV Exposure: 90 Days
- Can be direct fixed to timber and steel-framing
- Can be used where cladding is installed over a cavity system or direct fixed cladding
- Can be used for residential and commercial buildings
- Thick and strong
- 100m² available upon request (MOQ required)



AVAILABLE SIZES

| | |
|----------------|------------------|
| 2740mm x 18.3 | 50m ² |
| 2740mm x 27.4m | 75m ² |



DRISTUD COOL WINDOW FLASHING TAPE

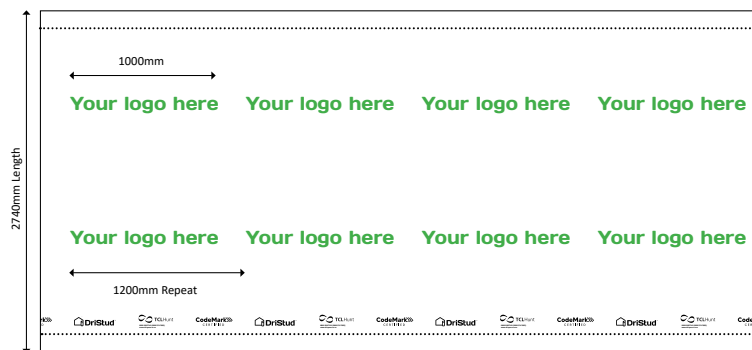
- CodeMark™ Certified
- Service Temperature: -28°C to 80°C
- UV Exposure: 180 Days
- Suitable for residential or commercial, timber or steel framed buildings
- Can be used with DriStud Wall Wrap and with rigid air barriers made of plywood, fibre cement, OSB and James Hardie Board
- Suitable for all wind zones of NZS 3604 up to and including "Extra High"
- 381µm thick
- Only one layer on the sill



AVAILABLE SIZES

| | |
|-------------|-----------------|
| 200mm x 25m | 4 rolls/carton |
| 150mm x 25m | 8 rolls/carton |
| 75mm x 25m | 16 rolls/carton |

Custom Print

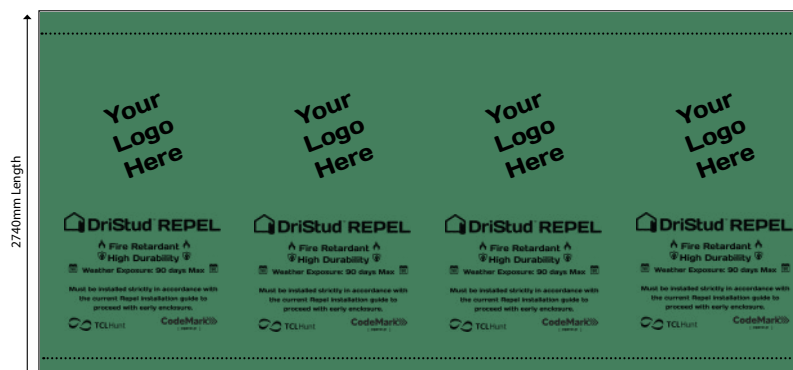


AVAILABLE COLOURS:
Maximum 2 colours per print



DRISTUD WALL WRAP & DRISTUD ECOWALL CUSTOM PRINT

- Lead time: 1-4 weeks as custom print is done locally in New Zealand
- MOQ: c. 36
- Size available: 2740mm x 36.5m 100m²
- Either a 1 lane print or 2 lane print
- *Please note, DriStud EcoWall is only available in 1 lane print*
- 7 colours to choose from (maximum 2 colours per print)



AVAILABLE COLOURS:



DRISTUD REPEL CUSTOM PRINT

- Lead time: 1-4 weeks as custom print is done locally in New Zealand
- MOQ: c. 73 rolls (50m²) & 49 rolls (75m²)
- Sizes available: 2740mm x 18.3m (50m²) & 2740mm x 27.4m (75m²)
- 1 lane print
- 2 colours to choose from

For more information on custom print, visit [DriSpace.co.nz](https://driSpace.co.nz) or call us on **0800 374 7883**

Products - DriStud Range

Fire Retardant Synthetic Roof Underlays



DRISTUD FRU38 ROOF UNDERLAY

- CodeMark™ Certified
- 220 gsm
- Self-supporting
- UV Exposure: 21 days
- Fire retardant
- Breathable and absorbent
- Suitable for wind zones up to and including 'Extra High'
- Can be installed over timber and steel roof framing



AVAILABLE SIZES

| | |
|--------------|-------------------|
| 1250mm x 40m | 50m ² |
| 2500mm x 40m | 100m ² |



DRISTUD FRU36MT ROOF UNDERLAY

- CodeMark™ Certified
- 185 gsm
- Self-supporting
- UV Exposure: 7 days
- Fire retardant
- Breathable and absorbent
- Suitable for wind zones up to and including 'Extra High'
- Can be installed over timber and steel roof framing



AVAILABLE SIZES

| | |
|--------------|------------------|
| 1250mm x 40m | 50m ² |
|--------------|------------------|



DRISTUD FRU36 ROOF UNDERLAY

- CodeMark™ Certified
- 150 gsm
- Self-supporting
- UV Exposure: 7 days
- Fire retardant
- Breathable and absorbent
- Suitable for wind zones up to and including 'Extra High'
- Can be installed over timber and steel roof framing



AVAILABLE SIZES

| | |
|-----------------|-------------------|
| 1350mm x 55.6m | 75m ² |
| 2700mm x 37.04m | 100m ² |

Products - DriStud Range

Non-Fire Retardant Synthetic Roof Underlays



DRISTUD RU24 ROOF UNDERLAY

- CodeMark™ Certified
- 170 gsm
- Self-supporting
- UV Exposure: 21 days
- Breathable and absorbent
- Suitable for wind zones up to and including 'Extra High'
- Can be used only where fire retardant underlay is NOT required
- Suitable for direct fix with absorbent and non-absorbent cladding including metal cladding

CodeMark 
CERTIFIED

AVAILABLE SIZES

| | |
|--------------|-------------------|
| 1250mm x 40m | 50m ² |
| 1500mm x 40m | 60m ² |
| 2200mm x 50m | 110m ² |



DRISTUD RU22 ROOF UNDERLAY

- CodeMark™ Certified
- 145 gsm
- Self-supporting
- UV Exposure: 7 days
- Breathable and absorbent
- Suitable for wind zones up to and including 'Extra High'
- Can be used only where fire retardant underlay is NOT required
- Suitable for direct fix with absorbent and non-absorbent cladding including metal cladding

CodeMark 
CERTIFIED

AVAILABLE SIZES

| | |
|--------------|------------------|
| 1250mm x 40m | 50m ² |
|--------------|------------------|

Important Note:

In applications where synthetic roof underlays (RU24, FRU36 & FRU38) are exposed or used as a ceiling and wall liner, such as in shed/industrial building applications, direct and reflected UV exposure must be avoided. They will degrade under prolonged UV exposure.

Products - DriStud Range

White Faced Foil & Anti-Condensation Membrane



DRISTUD W11 WHITE FACED FOIL INSULATION

- CodeMark™ Certified
- 190 gsm
- Fire retardant
- Fully synthetic
- Vapour and water barrier
- Light diffuser insulation product
- Used for interior lining for commercial and industrial buildings, sports stadiums and warehousing facilities where extra clean white finish is required

AVAILABLE SIZES

1350mm x 56m

75m²

DRISTUD W8 WHITE FACED FOIL INSULATION

- Medium weight
- 153 gsm
- Fire retardant
- Extra heavy duty
- Specifically designed for commercial roofs and roof sarking with a high water barrier and medium vapour barrier classification
- Offers superior strength, durability and acts as a barrier to radiate heat, moisture, drafts and dust

AVAILABLE SIZES

1350mm x 56m

75m²

DRISTUD NODRIP - ANTI CONDENSATION FLEECE

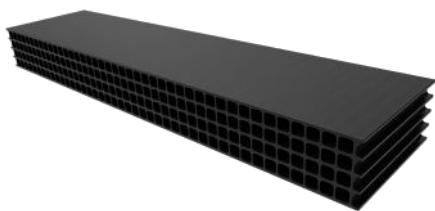
- Easy handling and assembly
- Antibacterial
- Flame retardant
- Tear resistant
- Extremely durable
- Reduces exterior noise

AVAILABLE SIZES

Please note, DriStud NoDrip is not a stocked item and is brought in on Indent basis.

Please contact DriSpace to discuss available sizes, pricing and order requirements: orders@dripace.co.nz

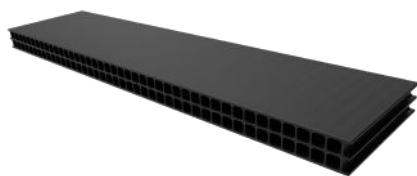
Products - Vent Range



20mm THICK VENTED CAVITY BATTEN - VB20

- BRANZ Appraised (for both roof and wall application)
- Polypropylene ventilated batten
- 20mm cavity for ventilation and drainage in both roof and wall cavity
- Reduces the risk of moisture build up and condensation
- Convenient peel-off adhesive backing which eliminates the need for nails or glue, to adhere to timber, metal and building wraps for temporary fixing
- Easy to install
- Manufactured in 1800mm lengths for easy handling
- Strong and robust providing passive airflow of 16,000m² per linear metre
- Insect proof with 4mm vents preventing ingress of nesting insects
- All manufactured using some recycled plastics

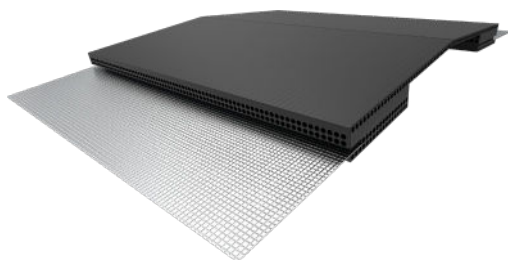
| PRODUCT/CARTON SIZES | SMALL PACK | LARGE PACK |
|----------------------|---------------------|---------------------|
| Quantity | 25 units per carton | 50 units per carton |
| Unit Length | 1800mm | 1800mm |
| LM Per Carton | 45LM | 90LM |



10mm THICK VENTILATION & DRAINAGE BATTEN - VB10

- BRANZ Appraised
- Polypropylene ventilated batten for roof applications
- 10mm cavity designed to facilitate passive airflow and cavity drainage between the roofing underlay or membrane and the roof cladding
- Prevents the transfer of dew point from the underside of the roofing underlay or membrane
- Convenient peel-off adhesive backing which eliminates the need for nails or glue, to adhere to timber, metal and underlays for temporary fixing
- Easy to install
- Manufactured in 1800mm lengths for easy handling
- Provides passive airflow of 8,000mm² per linear metre
- Insect proof with 4mm vents in preventing ingress of nesting insects
- All manufactured using some recycled plastics

| PRODUCT/CARTON SIZES | |
|----------------------|---------------------|
| Quantity | 50 units per carton |
| Unit Length | 1800mm |
| LM Per Carton | 90LM |

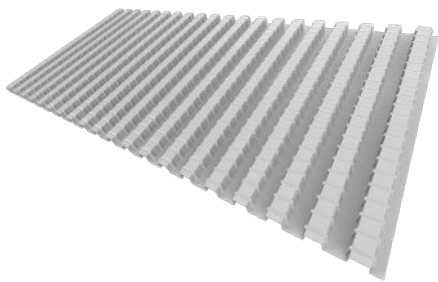


RIDGE VENT/RIDGE VENT DEEP TROUGH - RV10P/RV10DT

- BRANZ Appraised
- RV10P: For roof cladding with a trough depth of less than 34mm
- RV10DT: For roof cladding with a trough depth of 34mm - 48mm
- Releases hot air and eliminates condensation
- Recommended for cold roof pitch of over 30° and Skillion Roof
- An adhesive and flexible aluminium flashing which is designed to form to roofing profiles and prevent water ingress on any pitch roof
- Forms part of a passive ventilation system that works year round with no moving parts or energy consumption
- Not visible when covered with ridge flashing (NB: Ridge flashing not included)
- Insect proof - Recommended 4mm vents to prevent ingress of nesting insects
- All manufactured using some recycled plastics

| PRODUCT/CARTON SIZES | |
|----------------------|--------------------|
| Quantity | 6 units per carton |
| Unit Length | 1200mm |
| LM Per Carton | 7.2LM |

Products - Vent Range



INSULATION GUARD/ROLL PANEL VENT/EAVES BAFFLE - G502CL

- Designed to maintain a continuous 25mm air gap between the underside of the roofing membrane or sarking board and loft insulation at the eaves
- Provides a consistent flow of air into the roof space
- Castellated profile is laid across the top of the roof trusses/rafters parallel with the eaves level
- Ideal for trussed roofs of any degree pitch
- Suitable for both new build and roof renovation projects
- The extra width of the panel allows for better coverage when low pitch and deep insulation details are encountered
- 4 week weather exposure
- Made from recycled plastic

PRODUCT/CARTON SIZES

| | |
|---------------|--------------------|
| Quantity | 2 units per carton |
| Unit Length | 6000 mm |
| LM Per Carton | 12LM |



OVER FASCIA VENT - G1200N

- Most practical and cost-efficient method of ventilating the eaves for trussed roofs with pitch greater than 15°
- Easy to install
- Designed to discreetly ensure a calculated positive air flow into the roof space between the roof underlay and the fascia board
- G1200N - Airflow of 12,000mm² per linear metre or 1/300
- Compatible with either timber or metal fascias
- Designed with 4mm evenly spaced openings specifically sized to prohibit large insects gaining access but wide enough to prevent capillary action

PRODUCT/CARTON SIZES

| | |
|---------------|---------------------|
| Quantity | 20 units per carton |
| Unit Length | 1000 mm |
| LM Per Carton | 20LM |



OVER FASCIA VENT - G2500N

- Most practical and cost-efficient method of ventilating the eaves for skillion roof, and trussed roof with pitch less than 15°
- Easy to install
- Designed to discreetly ensure a calculated positive air flow into the roof space between the roof underlay and the fascia board
- G2500N - Airflow of 25,000mm² per linear metre or 1/50
- Compatible with either timber or metal fascias
- Designed with 4mm evenly spaced openings specifically sized to prohibit large insects gaining access but wide enough to prevent capillary action

PRODUCT/CARTON SIZES

| | |
|---------------|---------------------|
| Quantity | 20 units per carton |
| Unit Length | 1000 mm |
| LM Per Carton | 20LM |

Products - Vent Range



EAVES COMB FILLER - G1275

- Designed with flexible fingers that adjust to fill the gaps left when using profiled tiles or steel roof cladding
- Prevents entry of birds and large insects
- Eliminates the need to make or buy expensive purpose made profiled fillers that can block necessary airflow into the roof spacing between underlay and roof cladding

PRODUCT/CARTON SIZES

| | |
|---------------|---------------------|
| Quantity | 50 units per carton |
| Unit Length | 1000 mm |
| LM Per Carton | 50LM |



SOFFIT VENT - G700

- Designed to provide passive airflow into the roof cavity to reduce the risk of moisture build-up
- Suitable for new builds and renovations
- Should be used as part of a proprietary system for trussed and skillion roofs
- Should be used in conjunction with VENT Roll Panel Vent (G502CL) to ensure continuous unimpeded airflow into the roof void
- To be used as part of a proprietary ventilation system
- Only available in white

PRODUCT/CARTON SIZES

| | |
|-------------|---------------------|
| Quantity | 50 units per carton |
| Unit Length | 76mm W x 13.5mm |
| VENT Size | 4mm |

ROOF SPACE VENTILATION - TRUSSED ROOF

RECOMMENDED MINIMUM ROOF PITCH 5°

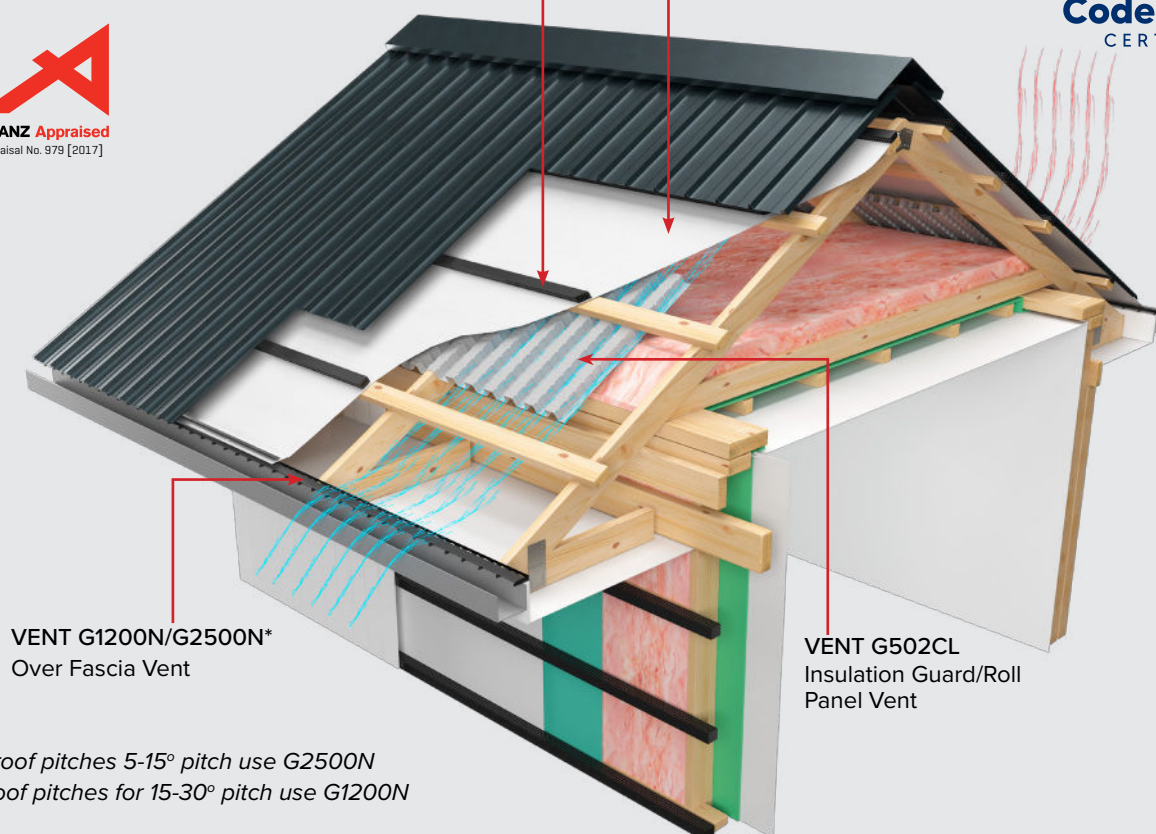
VENT VB10

BRANZ Appraised ventilation & drainage batten to prevent dew point condensation



VAPOUR PERMEABLE ROOFING UNDERLAY

CodeMark™ Certified underlays - EcoDri FR, FRU38, FRU36MT, FRU36, RU24, RU22



VENT G1200N/G2500N*
Over Fascia Vent

VENT G502CL
Insulation Guard/Roll
Panel Vent

*For roof pitches 5-15° pitch use G2500N
For roof pitches for 15-30° pitch use G1200N

Products must be used in combination as recognised in DriSpace technical details to ensure that essential calculated, continuous, unimpeded passive ventilation is achieved.

Refer to [DriSpace Moisture Management Design Guide](#) for more passive roof ventilation details.

ROOF SPACE VENTILATION - SKILLION ROOF

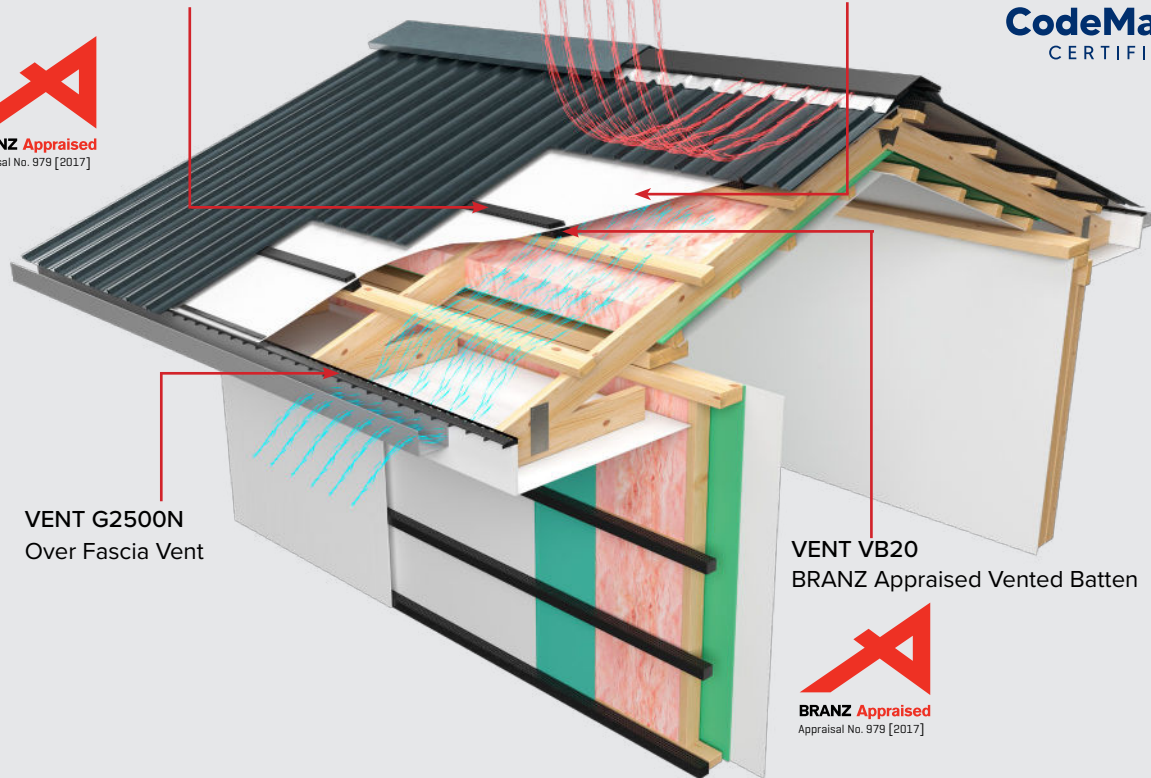
RECOMMENDED MINIMUM ROOF PITCH 5°

VENT VB10

BRANZ Appraised ventilation & drainage batten to prevent dew point condensation

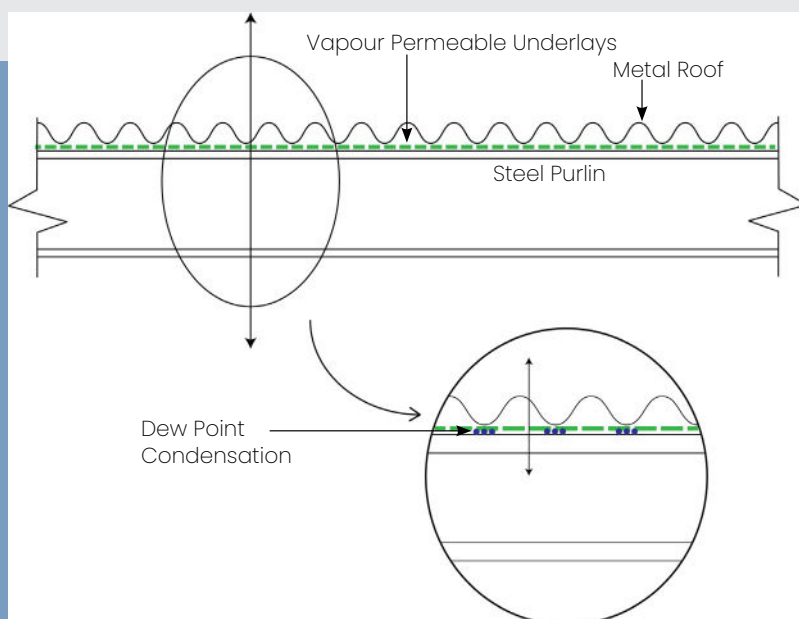


VAPOUR PERMEABLE ROOFING UNDERLAY
CodeMark™ Certified underlays - EcoDri FR, FRU38, FRU36MT, FRU36, RU24, RU22



VENT G2500N
Over Fascia Vent

VENT VB20
BRANZ Appraised Vented Batten



dew point condensation

For steel longrun with large surface contact areas with roof underlays, it is recommended ventilation and drainage above the underlay is created to defer the dew point condensation from the steel longrun.

Install VB10 on top of the underlay to create the ventilation and drainage pathway.

Products - Proctor Range

Self-Adhering Airtight Membranes



PROCTORPASSIVE WRAPTITE SA

- CodeMark™ Certified
- Self-adhering airtight and vapour permeable membrane for wall and roof applications
- Low initial tackiness for ease of installation
- Multiple substrate compatibility
- No primer required on most clean substrates down to -6°C
- Fire Retardant
- Tear, rip and puncture resistant during and after construction, reducing install costs
- Zero VOCs, and free of any chemicals on the Living Building Challenge Red List
- Passive House Institute Certified Component pH A
- Wide service temperature range, easily installed in all climates



| PRODUCT SIZE | |
|--------------|------------------|
| Roll Width | 1500mm |
| Roll Length | 50m |
| Coverage | 75m ² |



PROCTORPASSIVE WRAPTITE UV-SA

- CodeMark™ Certified
- Fire Retardant
- Self-adhering
- For prolonged UV exposure or open joint cladding application
- Vapour permeable adhesive layer
- High vapour permeance
- Tough material resists punctures and tears
- Multiple substrate compatibility
- Low VOC's
- Exceptional airtightness



| PRODUCT SIZE | |
|--------------|------------------|
| Roll Width | 1500mm |
| Roll Length | 50m |
| Coverage | 75m ² |

Products - Proctor Range

Airtight Membrane



PROCTORPASSIVE RAINSCREEN RS-IT

- Highly UV stable
- Fire Retardant
- High water resistance
- High vapour permeable wall membrane
- For open joint cladding
- Air tight
- Features factory applied integrated tape (RS-IT)

| PRODUCT SIZE | |
|--------------|--------------------|
| Roll Width | 1500mm |
| Roll Length | 35m |
| Coverage | 52.5m ² |

Products - Proctor Range

Internal Vapour Control/Airtight Membranes

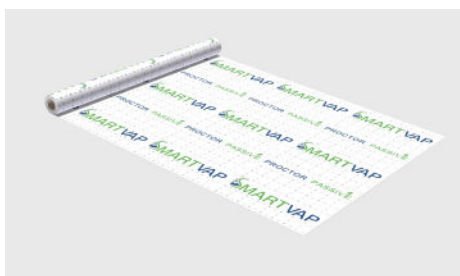


PROCTORPASSIVE GEOVAP120

- Vapour retarder and convection barrier
- Two-layer polyefin non-woven membrane resists the flow of vapour of both diffusion and air movement through wall, ceiling and floor assemblies
- Protects the building fabric and insulation from condensation and related problems such as mould, timber rot, corrosion and loss of thermal resistance
- Ideal for swimming pools and humid buildings
- Factory applied integrated tape
- Non-perforated and non-conductive

PRODUCT SIZE

| | |
|-------------|------------------|
| Roll Width | 1500mm |
| Roll Length | 30m |
| Coverage | 45m ² |



PROCTORPASSIVE SMARTVAP

- Complies with AS/NZS 4200.1
- Light duty air barrier with variable vapour diffusion resistance
- Fire retardant (FR Index: ≤5)
- High water resistance
- Non-perforated and non-conductive
- Lightweight and easy to handle
- Compatible with SabreSeal MS Facade and SabreBond SMP50

PRODUCT SIZE

| | |
|-------------|------------------|
| Roll Width | 1500mm |
| Roll Length | 30m |
| Coverage | 45m ² |

Products - Proctor Range

Other



PROCTORGEO HC8 ENKAVENT

- Three dimensional PA (polyamide) monofilament spacer for roof
- Provides permanent drainage channel for condensate or moisture that may get under the roof sheet
- Provides space for continuous air movement between the roof deck/underlay and metal roof
- Reduces corrosion risk - of particular importance with zinc or galvanized steel roof sheets
- UV resistant during installation
- Reduction in impact noise on metal roofing
- Allows for the movement of the roof sheet under temperature fluctuations
- Contributes to reduction in temperature of the roof substrate from solar radiation
- High air void ration (95%) for ultimate drainage capacity
- Flexible and lightweight for ease of install

PRODUCT SIZE

| | |
|-------------|--------------------|
| Roll Width | 1020mm |
| Roll Length | 75m |
| Coverage | 76.5m ² |

Products - Proctor System Accessories

Windows and Openings Applications



PROCTOR DRIFLASH TAPE

- Window flashing tape with high vapour permeance
- Suitable for High UV Exposure areas
- No primer required on most clean substrates
- Tough material; resists punctures and tears
- Multiple substrate compatibility
- Wide service temperature range
- Low VOC's
- Initial low tack for adjustability
- Exceptional for airtightness

AVAILABLE SIZES

150mm x 25m

200mm x 25m



PROCTOR YOUBYUTE FLEXI TAPE

- Suitable for corner mould applications
- Highly stretchable
- High tack
- Long term water resistance
- High ageing resistance
- Compatibility with Proctor Rainscreen (RS-IT)
- Air and water tight
- Low emission of VOC

AVAILABLE SIZES

80mm x 10m

6 rolls/carton

Products - Proctor System Accessories

Sealing Tape for Penetrations & Fixings



PROCTOR YOUBYUTE SEALING TAPE

- High tack
- Long term water resistance
- High ageing resistance
- Compatibility with Proctor Rainscreen (RS-IT) and ProctorPassive Wraptite SA/UV
- Air and water tight
- Low emission of VOC

AVAILABLE SIZES

50mm x 20m

12 rolls/carton

Products - Proctor System Accessories

Joining or Seam Tapes



PROCTORWRAP UV TAPE

- Joining tape for high UV exposure to be used with **ProctorPassive Rainscreen RS-IT**
- High vapour permeance (AS4200.1:2017 Class 4)
- No primer required on most clean substrates
- Tough material; resists punctures and tears
- Multiple substrate compatibility
- Wide service temperature range
- Low VOC's
- Initial low tack for adjustability
- Exceptional for airtightness

AVAILABLE SIZES

100mm x 25m

10 rolls/carton



PROCTORWRAP HIGH TACK PLUS TAPE

- Airtight bonding and sealing of overlaps of air and vapour barriers and vapour permeable membranes
- Suitable for bonding of smooth and slightly rough surfaces
- Can be used to provide a bond between steel or timber framing and membranes prior to the immediate mechanical fixing of the membrane
- High initial bond strength
- High initial tack adhesion
- Multiple substrate compatibility
- High-strength spun-bonded carrier
- Low VOC

AVAILABLE SIZES

60mm x 25m

18 rolls per carton



PROCTORWRAP YOURIPPA DUO TAPE

- Ideal for airtight bonding and sealing of overlaps of air and vapour barriers and vapour permeable membranes
- Suitable for bonding of smooth and slightly rough surfaces
- Can be used to provide a bond to steel or timber framing prior to the immediate mechanical fixing of the membrane
- Double sided tape
- Easy to tear without needing a cutter or scissors
- Quick and easy to use
- Black carrier for visibility of tape location
- Release liner for 2 stage application
- Moisture resistant

AVAILABLE SIZES

30mm x 20m

32 rolls per carton

DriSpace Comparison Chart

| DRISPACE | THERMAKRAFT | MARSHALL INDUSTRIES | PROCLIMA | MASONS | BAYONET |
|---|--------------------------------------|---------------------------------|---------------------------------|-----------------------------------|---|
| ROOF UNDERLAY | | | | | |
| DriStud EcoDri FR - 181gsm: MADE USING 80% GRS RECYCLED MATERIALS , CodeMark™ Certified, fire retardant, synthetic, self-supporting roof underlay | no comparable product available | no comparable product available | no comparable product available | no comparable product available | no comparable product available |
| DriStud FRU38 - 220gsm: CodeMark™ Certified, fire retardant, synthetic, self-supporting roof underlay | Covertex 407 | - | - | VHP Maxi Roof Underlay | - |
| DriStud FRU36MT - 185gsm: CodeMark™ Certified, fire retardant, synthetic, self-supporting roof underlay | Covertex 405 | | | VHP Ultra Roof Underlay | Bayonet BayoWrap Roof 07 Flame Spec (190gsm) |
| DriStud FRU36 - 150gsm: CodeMark™ Certified, fire retardant, synthetic, self-support roof underlay | Covertex 403 non self-supporting | HYDRA Roof Underlay | Solitex Extasana 3000 (150gsm) | VHP Strong Roof Underlay (140gsm) | Bayonet BayoWrap Flame Spec Roof 05 (112gsm) EXTRA LIGHT UNDERLAY |
| DriStud RU24 - 170gsm: CodeMark™ Certified, non-fire retardant , black faced synthetic, self-support roof underlay | - | HYDRA Roof Underlay | - | - | Bayonet BayoWrap Self-Support Roof 03 |
| DriStud RU22 - 145gsm: CodeMark™ Certified, non-fire retardant , grey faced synthetic, self-support roof underlay | Covertex 215 / Covertex 401 (145gsm) | - | - | VHP Value Roof Underlay (125gsm) | - |
| DriStud W11 - 190gsm: CodeMark™ Certified, white faced, fire retardant, medium weight synthetic foil | Thermakraft 397 | - | - | - | - |
| DriStud W8 - White faced, fire retardant, medium weight synthetic foil (153gsm) | Thermabar 344 (105 gsm) | - | - | - | - |

DriSpace Comparison Chart

| DRISPACE | THERMAKRAFT | MARSHALL INDUSTRIES | PROCLIMA | MASONS | BAYONET |
|--|---------------------------------|--|---------------------------------|---|---------------------------------|
| BUILDING WRAPS & TAPES | | | | | |
| DriStud EcoWall Wrap: MADE USING 80% GRS RECYCLED MATERIALS , CodeMark™ Certified, fire retardant, absorbent, breathable, air barrier wall wrap | no comparable product available | no comparable product available | no comparable product available | no comparable product available | no comparable product available |
| DriStud Wall Wrap: CodeMark™ Certified, fire retardant, absorbent, breathable, air barrier wall wrap | Watergate Plus | Hydra Wall Underlay, Tektok Building Wrap | Solitex Extasana | Barricade FR | Bayonet Bayowrap Wall Wrap |
| DriStud REPEL: CodeMark™ Certified, fire retardant, vapour permeable, water resistant, flexible air barrier | - | - | - | UNI PLUS Flexible Air Barrier, UNI PRO Flexible Air Barrier | - |
| DriStud Cool Window Flashing Tape: CodeMark™ Certified, UV Exposure 180 days, Service Temp 28°C | Thermaflash | Superstick | Tescon Extoseal | 40 Below Flashing Tape | - |
| PROCTORPASSIVE | | | | | |
| ProctorPassive Wraptite SA: CodeMark™ Certified, self-adhering, fire retardant, vapour permeable wall and roof underlay | - | Vaproshield | Solitex Extasana Adhero | - | - |
| ProctorPassive Wraptite UV-SA: CodeMark™ Certified, high UV, self-adhering, fire retardant, vapour permeable wall underlay for rainscreen cladding | - | RevealShield (producer statement required) | - | - | - |
| ProctorPassive Rainscreen (RS-IT): CodeMark™ Certified, high UV, vapour permeable wall underlay for rainscreen cladding | - | - | - | VHP Value Roof Underlay | - |
| ProctorPassive SmartVap: CodeMark™ Certified, vapour control layer to make the ceiling and wall airtight | - | - | Intello/Intello Plus | - | - |
| ProctorPassive GeoVap: Vapour control layer to make the ceiling and wall air tight for indoor swimming pool | - | - | - | - | - |
| ProctorPassive HC8 EnkaVent: 8mm Ventilation and Drainage PP mesh | Drainage Mat | - | Seperation Mesh | - | - |

TCL Warranty for DriSpace Products

COVER

TCL Hunt Ltd (hereinafter **TCL**) warrants to the first owner of the “**DriSpace Building Product**” (hereinafter **Product**) for a period of 15 years, from the date of original purchase, that the **Product** will be free from manufacturing defects when properly installed and maintained according to **Product** published installation instructions. (Refer to the **DriSpace** website for published installation procedures.) Should any such defect appear, **TCL** will provide either a replacement of the defective **Product** or a refund of the original purchase price at **TCL**'s sole and exclusive option in accordance with the prorating schedule set forth herein. Nothing in this warranty shall exclude or modify any legal rights a customer may have under the Consumer Guarantees Act 1993 or otherwise (except where the same may be excluded or modified by law). Under no circumstances and in no event shall **TCL** be liable for any labour charges or other expenses whatsoever in connection with the removal or installation of either the original or replacement **Product**. In the event of replacement under the terms of this warranty, the original warranty shall apply to the replaced **Product** and will extend for the balance of the warranty period in effect at the time the **Product** proved defective.

Number of years of use obtained after the original purchase date TCL's prorated share of warranty obligation as follows:

Year 1: Original purchase price. Years 2 through 15: Purchaser shall incur a 6.6% reduction per year. If the original purchase price cannot be established by the covered person or entity by producing a copy of the original sales receipt, the cost will be determined by **TCL** in its sole and reasonable discretion. **TCL** replacement of the defective **Product** or granting of a refund pursuant to the terms of Section 1 of this Warranty **SHALL BE THE SOLE EXCLUSIVE REMEDY** available to the covered person or entities with respect to any defect. **TCL** will not refund or pay any costs in connection with labour or supporting materials. Any refund or material replacement by **TCL** shall constitute a full settlement and release of all claims of any covered person or entity hereunder for damages or other relief and shall be a complete bar to any litigation filed subsequently to the covered person or entity's acceptance of such refund or material replacement.

UNDER NO CIRCUMSTANCES SHALL DRISPACE PRODUCTS BE RESPONSIBLE FOR INCIDENTAL OR CONSEQUENTIAL DAMAGES WITH RESPECT TO ECONOMIC LOSS, INJURY, DEATH, OR PROPERTY DAMAGE, WHETHER AS A RESULT OF BREACH OF THIS WARRANTY, NEGLIGENCE OR OTHERWISE.

CONDITIONS OF WARRANTY

- The **Product** must be stored according to the supplier's instructions at all times between purchase and installation.
- The **Product** must be installed according to the **DriSpace** printed installation procedures as set forth on the **DriSpace** website and published literature, and must be designed and constructed in strict compliance with all the relevant provisions of the current New Zealand Building Code, regulations and standards and in accordance with the terms specified in any building consent issued by the local or territorial authority in which the project is undertaken.
- The **Product** must be installed by or under the direct supervision of a registered or licensed building practitioner. The **Product** must be installed in accordance with the New Zealand Metal Roofing and Wall Cladding Code of practice.
- If conflicts exist between applicable codes and **DriSpace** installation instructions, the installer is responsible to contact DriSpace customer service for clarification of installation instructions.
- Failure to install and finish the **Product** per the **Product** published instructions may affect **Product** performance and will void the Warranty.

TCL Warranty for DriSpace Products

WHAT THE CUSTOMER MUST DO

- The claimant must provide proof that he/she is a covered person or entity and notify **TCL** in writing within thirty (30) days after discovery of any claimed defect or failure covered by this Warranty and before beginning any permanent repair.
- The claimant must provide proof of the date of purchase and that the **DriSpace** installation procedures were followed, as well as proof of property ownership.
- Upon discovery of a possible defect or failure, the covered person or entity must immediately, and at the covered person or entity's own expense, provide protection of all property that could be affected until the defect or failure is remedied.
- The property owner will be required to submit a sample and photographs of the defective material to **TCL** for analysis. **TCL** will then investigate the claim and examine the material claimed to be defective.
- If requested, the property owner must provide access for examination by any agent of **TCL**. If a defect covered by this warranty is confirmed, **TCL**, within a reasonable amount of time after the inspection, will replace the **Product**, or refund the original purchase price of the defective **Product**, pursuant to the terms of this warranty.

LIMITATIONS

This warranty does not provide protection against any failure, defect or damage caused by situations and events beyond normal exposure conditions, including but not limited to:

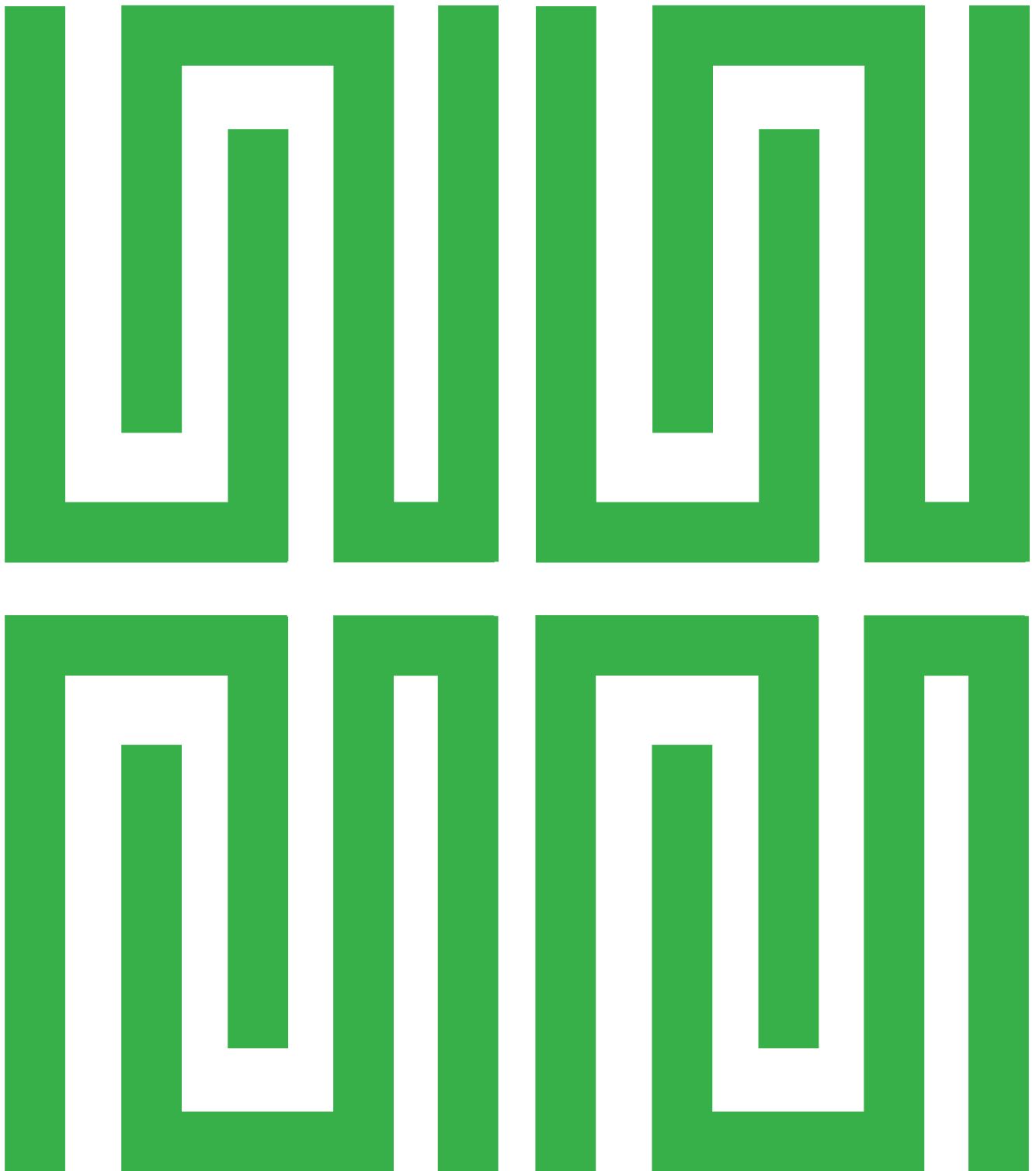
- Misuse, abuse, neglect or improper handling, shipping or storage, or installation of the **Product**.
- Improper application or application not in strict adherence to the **DriSpace** written application instructions.
- Improper installation of framing or other accessories.
- Settlement of structural movement and/or movement of materials to which the **Product** is attached.
- Damage from incorrect design of the structure.
- Use of accessories that do not properly receive and/or secure the **Product**.
- Impact of foreign objects, fire, earthquake, flood, lightning, hurricane, tornado, severe weather (including, but not limited to, unusual climate conditions) or other casualty or act of God.
- **DriSpace Products** are not a food for mould and mildew; however, materials that land on the **Product** may be. Accordingly, growth of mould, mildew, fungi, bacteria, or any organism on any surface of the **Product** (whether on the exposed or unexposed surfaces) and in this respect, any claims of damage caused by mould or mildew are expressly excluded.
- **Lack of proper maintenance or any cause other than manufacturing defects attributable to DriSpace Products.**

TCL will have no responsibility hereunder for defective Product subjected to further processing or alteration after shipment.

- **TCL** reserves the right to discontinue or modify any of its **Products** without notice to the property owner/consumer and shall not be liable as a result of such discontinuance or modification. If **TCL** replaces any material under this warranty, it may substitute Product designated to be of comparable quality or price range in the event the **Product** initially installed has been discontinued or modified.

DISCLAIMER & OTHER CONDITIONS

- In no event will **TCL** be liable for any incidental, special, indirect, or consequential damages of any kinds, including any damage to the building, its contents, or any persons therein, whether resulting from non-delivery or from the use, misuse, or inability to use the Product, or from defects in the Product. This warranty replaces all other oral or written warranties, liabilities, or obligations of **TCL**.
- All Warranties, Conditions, Liabilities and Obligations other than those specified in this Warranty are excluded to the fullest extent allowed by law. In particular, where the **Product** is supplied for the purposes of a business, the guarantees contained in the consumer guarantees act 1993 do not apply.
- In no event shall **TCL** be liable for consequential or incidental damages of any kind, including any damage to the building, its contents, or any persons therein, resulting from the breach of the Warranty. No Field Representative or Distributor or Dealer of **TCL** is authorized to make any change or modification to this Warranty.



DRISPACE IS A DIVISION OF

